

Spare your collaborators.....

PUCEST[®] protect GmbH

PUCEST® OVERVIEW FLYER

Spare your collaborators....



Complex and time-consuming repairs.

Bugged collaborators



THE solution...

The PUCEST® wear protection

With the possibility of a quick and uncomplicated reparation

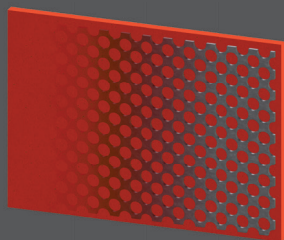
Quick and easy repair.

Content collaborators



PUCEST® wear protection technology

PUCEST® plates



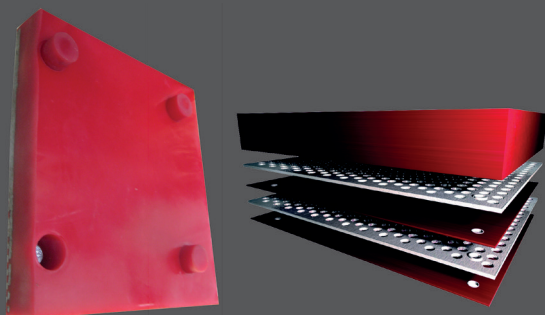
PUCEST® wear plates with a perforated sheet insert were developed as wear protection system for the lining of containers and funnels. The plates are screwed and can be easily installed independently as they can simply be fastened, cut, drilled and bent due to the cast-in perforated sheet.

The plates can be edged and even milled.

Later possible erosions can be mended quickly with PUCEST® TIX.

The plates can be delivered with a perforated sheet insert made of steel or with a perforated sheet insert made of aluminum, which is manually deformable.

The PUCEST® Multilayer



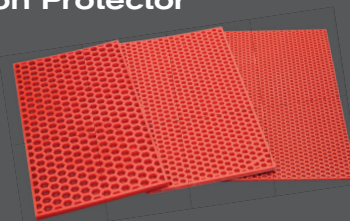
For very extreme requirements
Extremely high wear resistance
Abrasion according to DIN 53516 / ISO 4659 – 5.8 mm³

Very dimensionally stable due to the 4 mm perforated sheet insert
60 % less weight compared with a normal insert made of steel

At any time repairable with PUCEST® TIX
Size and dimensions according to the desires of the client
Easy assembling

PUCEST® Hexagon Protector

Film:



New highlights are our newly developed honeycomb panels.

This PUCEST® Hexagon Protector which is designed with a completely new geometry for a grain size from 0 to 16 mm works according to a simple principle:

A part of the transported material, which cannons into the plate, accumulates in the combs and adopts thus a buffer function. The wear effect is thereby clearly slowed down. A further advantage of the deflector results from the elasticity. Coarse material (for example grit) does not break due to the impact.

With this deflector, the abrasion and the noise emissions can be reduced clearly.

It is characterized by a high elasticity as well as a very high impact resistance and a resistance against oils and fats.

Economically, the reduction of costs for spare parts and repairs are seen as big advantages.

PUCEST® deflectors



Deflectors for transfer points with pocket buffer, for a grain size from 0 to 32 mm or with step profile, for a grain size from 0 to 75 mm, depending on the profile of requirements.

PUCEST® OVERVIEW FLYER

The PUCEST® HM composite panels

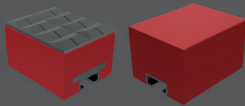


The PUCEST® HM composite panels are used in tubes, skips, chutes and funnels in which hard impacts and massive abrasive wear can appear.

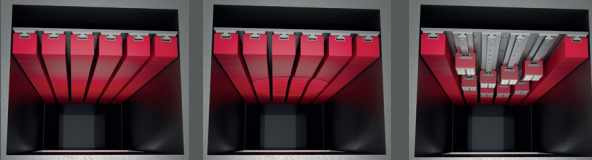
For these hard requirements, the PUCEST® HM composite panels are an excellent choice.

System impact bars

The flexible impact protection



Variable array of different system impact bars as modules on guide rails that can be bolted or welded into the system as complete components.



PUCEST® funnel linings



Discharge funnels as compact insertion with or without rod basket

Pre-rolled funnel segments for screwing in

Extremely wear resistant linings for discharge funnels, at any time repairable with PUCEST® TIX

Very good slide properties, immune to oils and fats

All sizes and versions deliverable, custom-made production

PUCEST® discharge hoses



Discharge hoses from PUCEST®

all lengths, diameters and strengths
conical versions
resistance against separating agents
extremely abrasion-resistant
very good slide properties
weather-proof
highly flexible



PUCEST® PUR Do it yourself spray system

The PUCEST® PUR spray system is an innovative solution to protect different undergrounds easily from wear. Surfaces can be coated quickly and cleanly with polyurethane by means of the PUCEST® PUR spray system cartridges. A seamless and professional surface coating is possible.

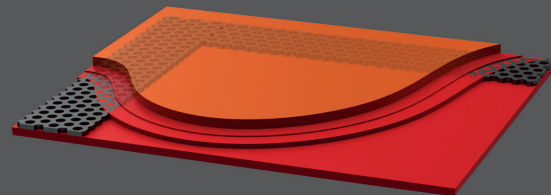


Investment costs are clearly under 1000,-€

Available with 1.5 kg 85°/95° Shore cartridges

Available with 0.6 kg 85°/95° Shore cartridges

PUCEST® hybrid plate self-cleaning and anti-adherent



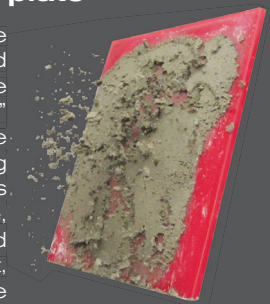
A self-cleaning wear plate, in frame shape, composed of different PUCEST® PUR Shore hardness values.

The self-cleaning properties lead to an even more smooth application without long standstill times.

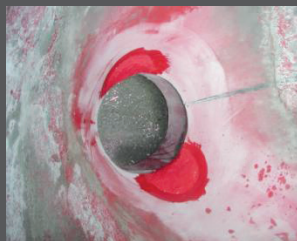
Being in use, for example as lining of a vibrating chute, the properties of the hybrid plate result in an optimum conveying result.

The PUCEST® impulse plate

Up to now material deposits have been prevented or corrected with "shakers". This principle resulted from a "knocking" or stroke effect against the static construction or lining whereby serious damages arose in the course of time, which could only be repaired with high effort. In contrast, the flexible PUCEST® impulse plate acts with impulse movements. Due to the impulse movements, material deposits are "blasted away". Thereby no stroke effect against the static construction or lining occurs. At the same time, the PUCEST® impulse plate offers the same advantages as the "normal" PUCEST® wear plates do, for example quick exchange or extremely high wear resistance.



PUCEST® TIX spackle



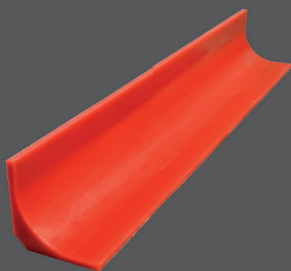
PUCEST® Tix was developed especially for the repair of PUCEST® wear protection systems.

Conventional wear protection solutions necessitated usually the exchange of the complete wear protection surface.

Since the development of PUCEST® Tix this is no longer necessary, as damaged positions can be repaired.

Wear resistant repair-spackle

PUCEST® “round corner”



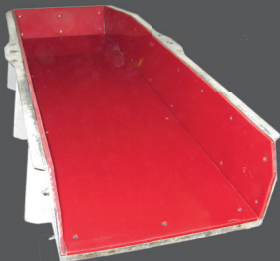
Film:



The PUCEST® round corner, the optimization of your material flow.

It prevents the accumulation of material in the corners.

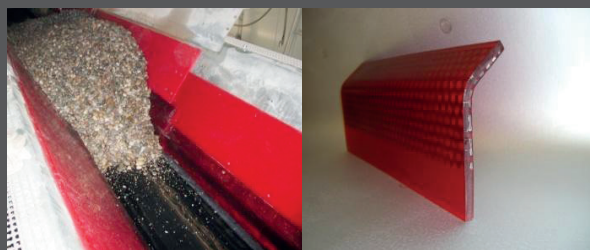
PUCEST® vibration channel lining



Extreme wear resistant lining for vibration channels

The short standstill periods for the exchange of damaged lining parts are a big advantage.

PUCEST® material guidance



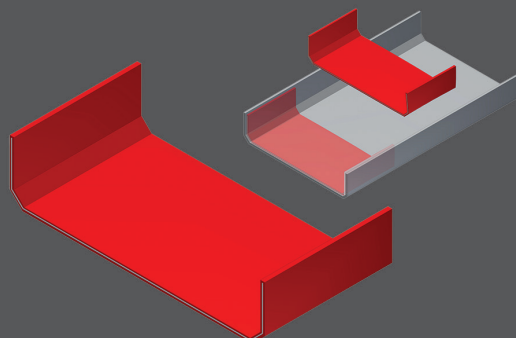
The PUCEST® material guidance for conveyors protects the lateral guidance of the bands and ensures a constant material flow.

It is a combination of PUCEST® plates with and without perforated plate.

The perforated sheets serve as fastening and stabilization. Due to its pretension, the PU-part has light contact with the conveyor and it adjusts automatically, so that no material falls down on the left or right side.

The wear protection can be assembled in any height and length and can be combined with other PUCEST® plates.

PUCEST® body lining



The repairable PUCEST® body lining can be delivered in every desired version.

The lining consists of screw-in perforated plate segments which can be edged and rolled.

Later possible erosions can be mended at any time quickly with PUCEST® TIX.

The plates can be delivered with a perforated sheet insert made of steel or with a perforated sheet insert made of aluminum, which is manually deformable.

PUCEST® OVERVIEW FLYER

PUCEST® shaft and crosshead protector



The perfect protection for your shaft

The protectors, which are made of PUCEST® 85 Shore, are extremely wear resistant and can be installed very easily and user-friendly.

The protectors are deliverable in nearly every diameter and strength.

Easy and quick assembly due to the Spax fastenings, no preparation of the underground lasting for hours necessary

PUCEST® wheel coating



Extreme wear resistant wheel coatings
Up to a diameter of 1200 mm, up to a weight of 400 kg

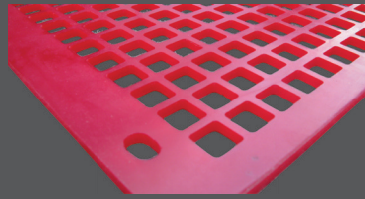
PUCEST® elevator bucket



Standard elevator bucket according to DIN all version and sizes deliverable (arched or with bead, no problem)
Elevator bucket with PUCEST® flex bottom
Excellent and complete emptying of the buckets due to the flexible PUCEST® bottom

PUCEST® elevator bucket
All sizes and versions deliverable, custom-made production.

PUCEST® screen linings



Screen linings from PUCEST® are characterized by a good abrasion resistance and achieve thus a very much longer wear life span compared

to steel screen bottoms.

They are produced in pierced or water-jet cut form, in nearly every desired dimension.

Also available in an anti-adhesive version.

PUCEST® wheel loader blade



Film:



The perfect solution for the bucket of your wheel loader

Perfect surface cleaning in one stroke

Cutting edges on both sides: double useful life as the cutting edge can be easily turned around

Very good sound insulation

PUCEST® Mixing machine protection agent MS-2



PUCEST® MS-2 prevents sticking of concrete and cement grout to machines and devices. The available corrosion inhibitor sticks to the metal surface and covers them with a uniform coating. Thus, rough cleaning with a hammer or grinding devices is not necessary. The protection agent is uniformly spread on the surface with the help of a thin brush, a brush or a dispenser after the cleaning and on wet basis or before the machine operation. After the end of operation the machines and devices are sprayed and cleaned with water.



PUCEST® mixing technique

PUCEST® universal mixing arm



Torsion spring-loaded mixing arm for the retooling of pan mixers

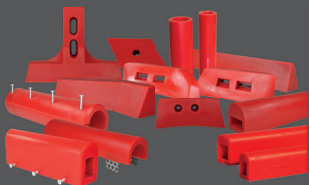
Every adjustment work can be carried out from the outside. The rotor cover has not to be opened any longer.

Universally attachable at every pan mixer

Film:



PUCEST® mixing tools



Film:



The PUCEST® mixing tools are available in the form of shovels, arm protectors, clearing rails and scrapers for every turbine mixer.

All PUCEST® mixing tools impress with their extremely high wear resistance and a wear life span above the ordinary.

A further advantage of the PUCEST® mixing tools is their specific elasticity: mixer bottoms and mixer linings are spared with the usage of PUCEST® mixing tools, as the material accommodates itself to the surface without scratching it.

Mixing! Not sliding!

With the PUCEST® universal blading, suitable for every pan mixer

PUCEST® HM composite tools



The usage of PUCEST® mixing shovels made of a cemented carbide interconnection is particularly suitable for extreme requirements and very high requests for wear resistance and wear life span.

The shovels are bonded with cemented carbide tips on the outside edges and supplementary furnished with cast-in cemented carbide granules in an area on the wear side. The cemented carbide granules account for the half of the wear volume.

Neither the tips nor the granules break out over the years.

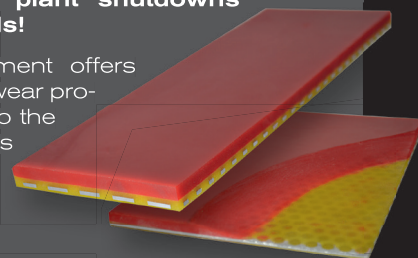
PUCEST® mixing tools which are made of a composite of nodular iron and cemented carbide impress with excellent wear life spans and constant mixing results in the long term.

PUCEST® signal wear protection plate

The perfect wear monitoring

Stop with unplanned plant shutdowns and costs for standstills!

Our innovative development offers you not only a first-class wear protection, but signals also the upcoming replacements in due time, especially at positions where it is difficult to see the thickness of the lining.



- no more unforeseeable plant shutdowns
- long standing times due to the high wear resistance
- good abrasion resistance
- resistant against humidity, oils, fats, mixer protectors
- low temperature sensitivity
- it is no problem to mill, roll or edge the plates for the desired purpose
- quick exchange of worn out plates
- easy screwing with the base plate

